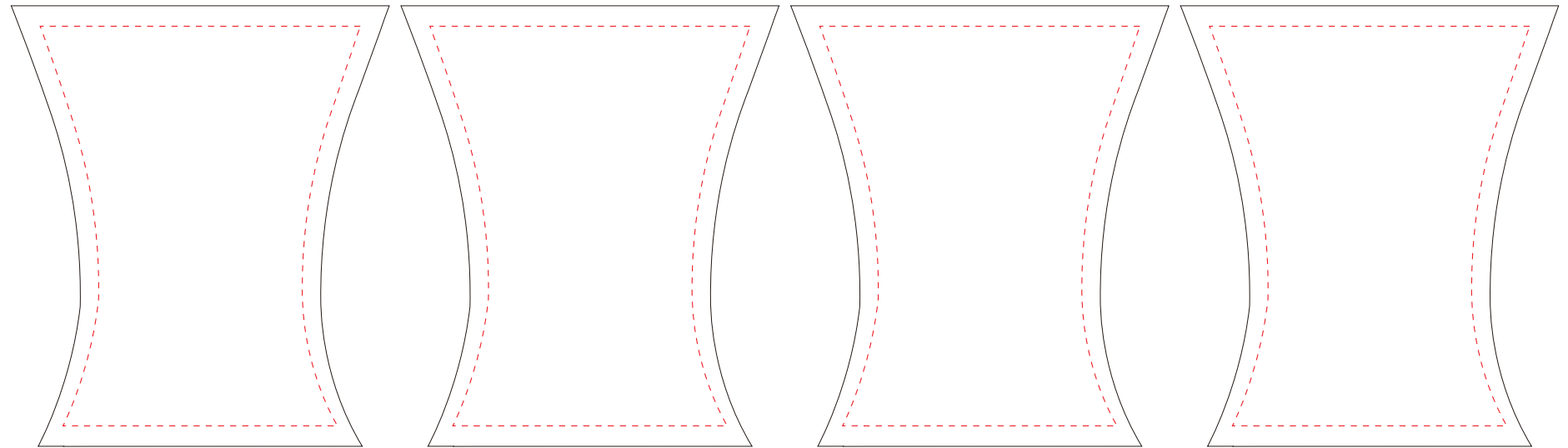






# 142-R2F

## Stretch Round Table Cover

### Legs



 **BACKGROUND** Topper - 37.5"w X 37.5"h  
Legs - 23.623"w X 27.56"h

 **SAFE DESIGN AREA** Topper - 29.5"w X 29.5"h  
Legs - 20"w X 25"h

### ART GUIDELINES

Template is set up to 10% scale.

Do not resize template or change size/shape of pole sleeve.

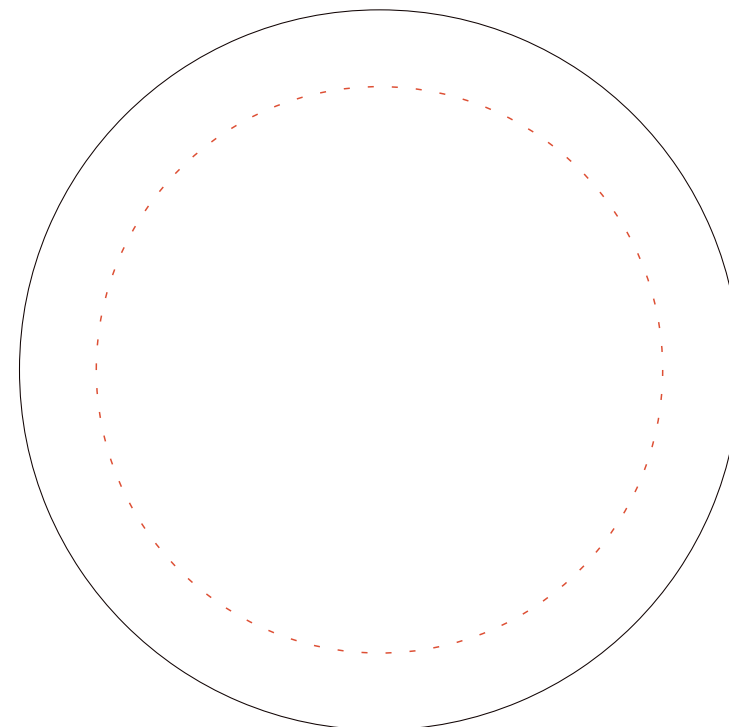
Convert all text to outlines.

Pantone Solid Coated colors should be used to ensure matching.

We accept MAC or PC versions of art.

Digital Printing Requirements: All art must be Vector/original art, saved as an .EPS or an .AI file, with all fonts converted to curves. If the artwork includes a photographic image, the image must be submitted as a 300 DPI (150 DPI minimum) at actual print size. Please note that we are limited to using files that are 900MB or less. Files which are too large to be emailed may be submitted, at no charge, through Wetransfer.com

(Note: PDF files may be useable but must be reviewed first by our Art Dept. to assure quality)



### Topper

